

All rights reserved by **CNH Industrial**.

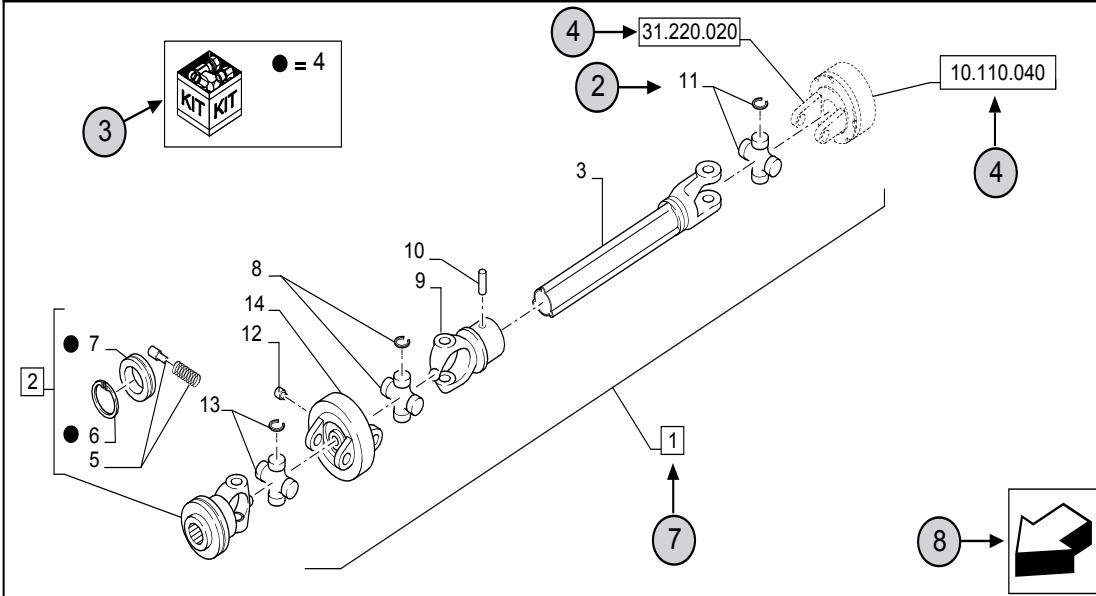
The information contained in this catalogue is intended to be of a general nature only. **CNH Industrial** may at any time and from time to time, for technical or other necessary reasons, modify any of the details or specifications of the product described in this catalogue.

To be sure of getting accurate, detailed and up-to-date information, an intending buyer should consult his nearest **CNH Industrial** dealer or distributor.

Single item numeration method used in this catalogue may not be used without written consent from **CNH Industrial**

31.220.010	01	p1	10/2014
------------	----	----	---------

VAR - 123782, 789101,987654 - PTO - D650



STANDARD ← 6

23	9	10	31.220.010	01	p1	10/2014
----	---	----	------------	----	----	---------

VAR - 123782, 789101,987654 - PTO - D650

11 12 13 14

REF	FN	PART NUMBER	YR/SN	QTY	DESCRIPTION
1	1	86529340	20	1	SHAFT PTO, Incl 2 - 11
2	15	84014007		1	YOKE, Incl 4 - 7 ← 7
3	16	NSS		1	NOT SERVICED SEPARATELY, SHAFT, 350mm, Incl in 1
4		84004292		1	KIT, Seal Kit, Incl 6, 7 ← 17
4		{84058743}		1	KIT, Seal Kit, Incl 6, 7
2				21	
18				22	
19					
		1 = FOR ITALY ONLY ← 5			

MODELS ← 1


- 1 Model Number and Model Description
- 2 Reference - Figure call-out of the part number.
- 3 Parts supplied in repair kits per symbol reference.
- 4 31.220.020 Part illustrated on the **Page** or in the **Figure** indicated, or calls for **Variations** or **Details**. Indicates components shown in detail elsewhere in the catalogue under the figure number shown.
- 5 Footnote references
- 6 Figure notes
- 7 1 2 Includes item(s) (See Description within partlist).
- 8 Orientation. (Arrow indicates front of the machine). 
- 9 Figure description.
- 10 General information of the figure.
- 11 Figure title number that aligns with the SRT. Standard Repair Time.
- 12 **Sequence** code within the assembly.
- 13 Page number within the sequence code.
- 14 **Date** of printing or updating of page (month-year).
- 15 **Note** - Relating to the Part Number. There is a key to symbols and abbreviations at the bottom of the text page.
- 16 Non-serviced parts.
- 17 Further description of the part to help confirm identification.
- 18 Not available as service part.
- 19 Part Number.
- 20 To be defined.
- 21 Total **Quantity** of the Part referred to in the page.
The quantity can be replaced by the following indications:
AR = quantity as requested.
- 22 Part **Description**.
- 23 Variant Codes

TABLE OF CONTENTS

00.100.01		INITIAL STOCKING LIST (ISL)
05.100.010		INITIAL STOCKING LIST (LIST A)
05.100.010		INITIAL STOCKING LIST (LIST A)
05.100.020		INITIAL STOCKING LIST (LIST B)
05.100.03		CAPACITIES, 40
05.100.03		CAPACITIES, BOOMER 50
05.100.03	01	FILTERS, BOOMER 40
05.100.03	02	FILTERS, BOOMER 50
10.001.01		ENGINE
10.001.02		CRANKCASE ASSY
10.001.02		CYLINDER BLOCK & RELATED PARTS
10.001.05		CRANKCASE
10.001.05		CRANKSHAFT BEARING
10.001.07		ENGINE GASKETS
10.001.08		ENGINE, MAIN FRAME
10.001.08		ENGINE, MAIN FRAME
10.101.01		CYLINDER HEAD
10.101.01		CYLINDER HEAD
10.101.01		CYLINDER HEAD
10.102.01		TIMING GEARS & COVER
10.102.01		TIMING GEARS & COVERS
10.102.02		OIL PAN
10.102.02		OIL PAN
10.103.01		CRANKSHAFT
10.103.01		CRANKSHAFT - JAN-01-2012 & BEFORE
10.103.01		CRANKSHAFT - JAN-02-2012 & AFTER
10.106.01		ROCKER COVER & CAMSHAFT
10.106.01		VALVE COVER
10.106.04		INTAKE & EXHAUST VALVE
10.106.04		INTAKE & EXHAUST VALVE
10.110.01		BALANCER
10.202.01		AIR CLEANER
10.202.01		AIR CLEANER
10.206.01		FUEL FILTER & FUEL TRANSFER PUMP
10.206.01		FUEL FILTER & FUEL TRANSFER PUMP
10.206.02		FUEL FILTER

TABLE OF CONTENTS

10.216.01	FUEL TANK & ASSOCIATED PARTS
10.216.01	FUEL TANK & ASSOCIATED PARTS
10.216.01	FUEL TANK & ASSOCIATED PARTS
10.216.02	FUEL COOLER
10.220.01	ENGINE, CONTROLS
10.220.01	THROTTLE CONTROL
10.220.02	ENGINE, CONTROLS
10.220.02	THROTTLE PEDAL
10.220.02	THROTTLE PEDAL
10.242.01	FUEL SYSTEM - FUEL INJECTION PUMP
10.242.02	FUEL SYSTEM - FUEL INJECTION PUMP
10.254.01	INTAKE & EXHAUST MANIFOLD
10.254.01	INTAKE & EXHAUST MANIFOLD
10.254.02	EGR
10.254.03	MUFFLER
10.254.03	MUFFLER
10.254.04	DPF, SUPPORT
10.254.05	EXHAUST PIPE
10.254.06	TURBOCHARGER
10.304.01	OIL PUMP & LINES
10.304.01	OIL PUMP & LINES
10.406.01	RADIATOR & RELATED PARTS
10.406.01	RADIATOR & RELATED PARTS
10.406.01	RADIATOR & RELATED PARTS
10.414.01	WATER PUMP & RELATED PARTS
10.414.01	WATER PUMP & RELATED PARTS
18.100.01	CLUTCH, CONTROLS
18.100.01	CLUTCH, CONTROLS
18.110.01	CLUTCH & DISC ASSY
18.110.01	CLUTCH & DISC ASSY, MECHANICAL TRANSMISSION
18.110.01	DAMPER
18.110.02	CLUTCH HOUSING, HYDROSTATIC TRANSMISSION
18.110.02	CLUTCH HOUSING, MECHANICAL TRANSMISSION
19.120.01	PTO, DRIVE SHAFT SHIELD
21.110.01	CLUTCH HOUSING
21.110.02	CREEPER LEVER COVER

TABLE OF CONTENTS

21.118.02		TRANSMISSION HOUSING, MECHANICAL
21.118.03		HYDROSTATIC TRANSMISSION, HOUSING
21.118.03		HYDROSTATIC TRANSMISSION, HOUSING
21.118.03		HYDROSTATIC TRANSMISSION, HOUSING
21.130.01		SHIFTER FORK - W/MECHANICAL TRANSMISSION
21.130.02		SHIFTER FORK - W/HST TRANSMISSION
21.130.02		SHIFTER FORK, MECHANICAL TRANSMISSION, RANGE GEAR
21.130.02	01	SHIFTER FORK, HYDROSTATIC TRANSMISSION, RANGE GEAR
21.130.02	01	SHIFTER FORK, HYDROSTATIC TRANSMISSION, RANGE GEAR
21.130.02	02	SHIFTER FORK, 4WD
21.130.03		SHIFTER FORK - FORWARD & REVERSE, MECHANICAL TRANSMISSION
21.130.03		SHIFTER FORK - FORWARD & REVERSE, MECHANICAL TRANSMISSION
21.130.03	01	SHIFTER FORK - FORWARD & REVERSE (USED ON & BEFORE 03/31/2012)
21.130.03	02	SHIFTER FORK - FORWARD & REVERSE (USED ON & AFTER 04/01/2012)
21.130.04		PTO 1 HARDWARE & CAPS
21.130.04		PTO 1 HARDWARE & CAPS
21.130.04		PTO 1 HARDWARE & CAPS
21.130.04		PTO 1 HARDWARE & CAPS
21.130.05		SHIFT LEVER & FORK, MAIN GEAR, MECHANICAL TRANSMISSION
21.130.05		SHIFT LEVER & FORK, MAIN GEAR, MECHANICAL TRANSMISSION
21.140.AE		RANGE GEAR, SHAFT - MECHANICAL TRANSMISSION
21.148.01		GEAR SHAFT - MECHANICAL TRANSMISSION
21.148.02		GEAR SHAFT - HST TRANSMISSION
21.148.02		GEAR SHAFT - HST, TRANSMISSION
21.148.03		RANGE GEAR, SHAFT, MECHANICAL TRANSMISSION
21.148.04		RANGE GEAR, SHAFT - HST TRANSMISSION
21.148.06		PTO SHAFT - HST TRANSMISSION
21.148.06		PTO SHAFT - HST, TRANSMISSION
21.148.06		PTO SHAFT - MECHANICAL, TRANSMISSION
21.148.07		PTO, DRIVE SHAFT
21.148.07		PTO, DRIVE SHAFT
21.152.01		MAIN SHAFT - MECHANICAL TRANSMISSION
23.101.01		4WD DRIVESHAFT FOR SUSPENDED FRONT AXLE
23.101.01		4WD DRIVESHAFT FOR SUSPENDED FRONT AXLE
25.100.05		FRONT AXLE
25.100.05		FRONT AXLE

TABLE OF CONTENTS

25.100.05		FRONT AXLE
25.101.01		FRONT AXLE, ASSY
25.101.01		FRONT AXLE, ASSY
25.101.01		FRONT AXLE, ASSY
25.101.02		FRONT AXLE, DRIVE, PINION
25.101.02	01	FRONT AXLE, DRIVE, PINION, 21-OCT-2014 & OLDER
25.101.02	02	FRONT AXLE, DRIVE, PINION, 22-OCT-2014 & NEWER
25.101.03		FRONT AXLE, RH
25.101.03		FRONT AXLE, RH
25.101.03		FRONT AXLE, RH
25.101.03	02	FRONT AXLE, RH, 22-OCT-2014 & NEWER
25.101.04		FRONT AXLE, LH
25.101.04		FRONT AXLE, LH
25.101.04	01	FRONT AXLE, LH, 21-OCT-2014 & OLDER
25.101.04	02	FRONT AXLE, LH, 22-OCT-2014 & NEWER
25.102.01		DIFFERENTIAL ASSY, FRONT
25.102.01		DIFFERENTIAL ASSY, FRONT
27.100.02		REAR AXLE
27.100.02		REAR AXLE
27.106.01		DIFFERENTIAL ASSY, REAR
27.106.01		DIFFERENTIAL ASSY, REAR
27.106.02		DIFFERENTIAL LOCK - W/MECHANICAL TRANSMISSION
27.106.02		DIFFERENTIAL LOCK - W/MECHANICAL TRANSMISSION
27.106.03		DIFFERENTIAL LOCK - W/ HST, TRANSMISSION
27.106.03		DIFFERENTIAL LOCK - W/HST TRANSMISSION
29.130.01		DAMPER
29.200.01		HYDROSTATIC PUMP
29.200.01	01	HYDROSTATIC PUMP (BSN - 2103012735)
29.200.01	02	HYDROSTATIC PUMP (2103012736 - ASN) - COMBINED NEUTRAL/RELIEF VALVE
29.200.01	03	HYDROSTATIC PUMP (2103012736 - ASN) - SEPERATE NEUTRAL & RELIEF VALVES
29.200.02		SERVICE KIT, HYDROSTATIC PUMP
29.200.02	01	HYDROSTATIC PUMP, ROTATING KIT
29.200.02	01	HYDROSTATIC PUMP, ROTATING KIT
29.200.02	02	HYDROSTATIC PUMP, SEAL KIT
29.200.02	02	HYDROSTATIC PUMP, SEAL KIT
29.200.03		HYDROSTATIC TRANSMISSION, CONTROL

TABLE OF CONTENTS

29.200.03		HYDROSTATIC TRANSMISSION, CONTROLS BOOMER 40
29.200.03		HYDROSTATIC TRANSMISSION, CONTROLS BOOMER 50
29.200.03		SEAL KIT, HYDROSTATIC PUMP
29.204.01		OIL COOLER, HYDROSTATIC TRANSMISSION
29.204.01		OIL COOLER, MECHANICAL TRANSMISSION
29.204.01		TRANSMISSION, OIL COOLER
31.130.01		PTO VALVE, HYDROSTATIC TRANSMISSION
31.130.01		PTO VALVE, MECHANICAL TRANSMISSION
31.225.AA		PTO SHAFT - MECHANICAL TRANSMISSION
33.120.01		BRAKES
33.120.01		BRAKES
33.120.02		BRAKE, CONTROLS - MECHANICAL TRANSMISSION
33.120.03		BRAKE, CONTROLS - HST TRANSMISSION
33.120.04		PARKING BRAKE, CONTROLS
33.120.04	01	PARKING BRAKE, LEVER, MECHANICAL TRANSMISSION
33.120.04	01	PARKING BRAKE, LEVER, MECHANICAL TRANSMISSION
33.120.04	02	PARKING BRAKE, LEVER, HST TRANSMISSION
33.120.04	02	PARKING BRAKE, LEVER, HST TRANSMISSION
33.120.05		BRAKE PEDALS, REAR, STANDARD, HST TRANSMISSION
33.120.05		BRAKE PEDALS, REAR, STANDARD, MECHANICAL TRANSMISSION
33.120.06		BRAKE PEDAL, FRONT, HST TRANSMISSION
33.120.06		BRAKE PEDALS, FRONT, MECHANICAL TRANSMISSION
35.100.01		HYDRAULIC HOUSING W/DRAFT
35.100.02		HYDRAULIC HOUSING
35.100.02		HYDRAULIC HOUSING - NO LEVEL W/DRAFT
35.100.03		LIFT CONTROL VALVE & LINK W/DRAFT
35.100.03		LIFT LINK, CONTROL VALVE
35.100.04		T/M CONTROL VALVE - MECHANICAL TRANSMISSION
35.100.05		T/M CONTROL VALVE - HST TRANSMISSION
35.100.06		POSITION & DRAFT CONTROL LINK
35.100.06		POSITION & DRAFT, LINK
35.100.08		HYDRAULIC CYLINDER
35.100.08		HYDRAULIC CYLINDER
35.100.09		UPPER LINK BRACKET W/O DRAFT
35.100.10		UPPER LINK BRACKET - W/O DRAFT DEALER OPTION KIT
35.108.01		HYDRAULIC CONTROL LEVER W/DRAFT

TABLE OF CONTENTS

35.108.02		HYDRAULIC HOUSING, LEVER
35.108.03		HYDRAULIC, LEVER GUIDE
35.108.03		HYDRAULIC, LEVER GUIDE
35.120.04		LIFT ROD
35.120.05	01	CHECK LINK - PLATE & PIN STYLE
35.120.05	02	CHECK LINK - BALL & PIN STYLE
35.204.02		HYDRAULIC LINES, FILTER & SUCTION FILTER W/O AUXILIARY - MECHANICAL TRANSMISSION
35.204.03		HYDRAULIC LINES, FILTER & SUCTION FILTER, LOADER VALVE W/O AUXILIARY - HST TRANSMISSION
35.204.04		HYD, SUCTION LINES
35.204.04		HYDRAULIC LINES
35.204.04		HYDRAULIC LINES
35.204.04		REMOTE CONTROL VALVE W/O RCV
35.204.05		HYDRAULIC F/PRESSURE LINES
35.204.05		HYDRAULIC LINES
35.204.06		REMOTE CONTROL, LEVER
35.204.07	1	REMOTE CONTROL VALVE, CAB
35.204.07	1	REMOTE CONTROL VALVE, ROPS
35.204.07	2	REMOTE CONTROL VALVE, CAB
35.204.07	2	REMOTE CONTROL VALVE, ROPS
35.359.02		LOADER VALVE
35.359.02		LOADER VALVE
35.359.03		LOADER VALVE, HYD. LINE
35.359.04		HYDRAULIC M/PRESSURE LINES
35.359.04		HYDRAULIC M/PRESSURE LINES
35.724.01		HYDRAULIC LINE, JOYSTICK
35.724.01		HYDRAULIC LINE, JOYSTICK
37.100.01		DRAWBAR AND HITCH
37.100.01		DRAWBAR AND HITCH
37.100.01		DRAWBAR HITCH
37.100.02		TOP LINK HOOK
37.100.02		TOP LINK HOOK
37.100.07		DIA KIT, FRONT TOW HOOK
37.108.01		LINK & ROD
37.108.02		DRAWBAR, LINK
37.110.01		HITCH, UPPER LINK, LOWER LINK
37.120.05		CHECK LINK - PIN & PLATE STYLE

TABLE OF CONTENTS

37.120.06		CHECK LINK - PIN & BALL BUSHING STYLE
41.204.01		STEERING COLUMN
41.204.01		STEERING COLUMN
41.204.01		STEERING WHEEL & COLUMN
41.204.02		STEERING WHEEL
41.216.01		STEERING CYLINDER & LINES - MECHANICAL TRANSMISSION
41.216.01	01	STEERING CYLINDER HYD. LINE, MECHANICAL TRANSMISSION
41.216.01	02	STEERING CYLINDER HYD. LINE, HYDROSTATIC TRANSMISSION
41.216.02		STEERING CYLINDER
41.216.02		STEERING CYLINDER & LINES - HST TRANSMISSION
41.216.03		STEERING TIE-ROD
41.216.03		TIE ROD
41.216.04	02	STEERING PUMP SEAL KIT
41.216.05		STEERING RESONATOR
44.511.02		FRONT & REAR WHEEL HARDWARE
44.511.02		FRONT & REAR WHEEL HARDWARE
44.511.03		FRONT & REAR WHEELS
44.511.03		FRONT & REAR WHEELS
50.200.01		AIR CONDITIONING, BLOWER
50.200.02		AIR COMPRESSOR
50.200.03		AIR CONDITIONING, A/C HOSE, CONDENSOR
50.200.04		AIR CONDITIONER, UNIT
55.100.01		ELECTRICAL WIRING
55.100.01		ELECTRICAL, WIRE HARNESS
55.100.01		ELECTRICAL, WIRE HARNESS, ENGINE
55.100.02		WIRE HARNESS, CAB
55.100.02		WIRE HARNESS, ROPS
55.100.03		DIAGNOSTIC COUPLER
55.100.04		ELECTRONIC CONTROL UNIT
55.201.03		ALTERNATOR & GLOW PLUGS
55.201.03		ALTERNATOR & GLOW PLUGS
55.201.03		STARTER, ALTERNATOR & GLOW PLUGS
55.301.01		BATTERY
55.301.01		BATTERY
55.404.02		HEADLAMP
55.404.03		REAR LIGHT

TABLE OF CONTENTS

55.404.03		REAR LIGHT
55.404.04		LAMP
55.404.05		TURN SIGNAL LAMP
55.404.05		TURN SIGNAL LAMP
55.404.06		REAR DRIVE & WORKLIGHT
55.404.07		REFLECTOR
55.404.08		WORK LAMP
55.408.01		HORN
55.418.01		INSTRUMENT PANEL
55.418.01		INSTRUMENT PANEL, GEARSHIFT
55.418.01	01	INSTRUMENT PANEL, GEARSHIFT (ON & BEFORE BUILD DATE 03/31/2012)
55.418.01	02	INSTRUMENT PANEL, GEARSHIFT (ON & AFTER BUILD DATE 04/01/2012)
55.418.02		INSTRUMENT PANEL, HYDROSTATIC TRANSMISSION
55.418.02		INSTRUMENT PANEL, HYDROSTATIC TRANSMISSION
55.512.02		RH, CONSOLE, SWITCH
55.512.02		RH, CONSOLE, SWITCH
55.512.03		RELAY, FUSE BOX, HYDROSTATIC TRANSMISSION
55.512.03		RELAY, FUSE BOX, MECHANICAL TRANSMISSION
55.512.05		RADIO, SPEAKER
55.512.06		RADIO
55.518.01		FRONT, WIPER MOTOR, WINDSHIELD WIPER
55.518.02		REAR, WIPER MOTOR, WINDOW
88.090.10		SEAT ADJUSTMENT KNOB KIT
88.090.10		SEAT SUSPENSION KNOB KIT
88.090.11		DIA KIT, REAR VIEW MIRROR
88.090.11		DIA KIT, TRACTOR, REAR VIEW MIRROR
88.100.01		DIA KIT, 2 FUNCTION MID MOUNT REMOTE HYDRAULIC VALVE - MT40236239
88.100.02		DIA KIT, 7-PIN CONNECTOR - MT20119007
88.100.02		DIA KIT, SUNSHADE
88.100.03		DIA KIT, REAR REMOTE CONTROL VALVE #1 - 16X16 - MT20117320
88.100.04		DIA KIT, REAR REMOTE CONTROL VALVE #1 - HST - MT20117323
88.100.05		DIA KIT, REAR REMOTE CONTROL VALVE #2 - 16X16 - MT20117321
88.100.06		DIA KIT, REAR REMOTE CONTROL VALVE #2 - HST - MT20117326
88.100.07		DIA KIT, SIDE STEP - MT20119015
88.100.08		DIA KIT, RH FENDER GRIP/GRAB HANDLE - MT20119014
88.100.09		DIA KIT, TOOLBOX

TABLE OF CONTENTS

88.100.09	DIA KIT, TOOLBOX
88.100.10	DIA KIT, GRILLE GUARD KIT - 719849226
88.100.11	DIA KIT, FRONT END WEIGHTS
88.100.12	DIA KIT, FRONT WEIGHT CARRIER
88.100.13	DIA KIT, TOOLBOX MOUNTING BRACKET - 710990086
88.100.14	DIA KIT, ENGINE BLOCK HEATER - 84316967
88.100.15	DIA KIT, FOPS CANOPY - 718857166 & 718857176
88.100.16	DIA KIT, OSCILLATION STOPS - 84386923
88.100.17	DIA KIT, WORKLIGHT - ROPS MOUNTED - 87702589
88.100.18	DIA KIT, REAR COUNTERWEIGHT BRACKET - 718740016
88.100.19	DIA KIT, LOWER LINK - MT20117609 & UPPER LINK
88.100.20	DIA KIT, DRAFT CONTROL LINK OPTION - MT20117607
88.100.21	DIA KIT, REAR WHEEL WEIGHTS, 105 LBS., FOR WHEELS WITH 420/70-24 REAR R4 INDUSTRIAL TIRES ONLY
88.100.22	DIA KIT, TRANSMISSION IMMERSION HEATER - 84579328
88.100.23	DIA KIT, MID PTO - MT20022005
88.100.23	DIA KIT, MID PTO HOUSING AND LEVER
88.100.23	DIA KIT, PTO GEAR HOUSING
88.100.24	DIA KIT, REMOTE CONTROL VALVE
88.100.24	DIA KIT, REMOTE CONTROL VALVE
88.100.52	DIA KIT, UPPER LINK BRACKET
88.100.52	DIA KIT, UPPER LINK BRACKET, DRAFT CONTROL
88.100.53	DIA KIT, HYDRAULIC CONTROL LEVER
88.100.53	DIA KIT, HYDRAULIC CONTROL LEVER W/DRAFT
88.100.54	DIA KIT, DRAFT CTRL. LINK OPT
88.100.54	DIA KIT, DRAFT CTRL. LINK OPT
88.100.55	DIA KIT, HYDRAULIC HOUSING ASSEMBLY
88.100.55	DIA KIT, HYDRAULIC HOUSING ASSEMBLY
88.100.56	DIA KIT, SLOW MOVING VEHICLE EMBLEM
88.100.57	DIA KIT, BEACON LAMP
90.100.01	HOOD
90.100.01	HOOD
90.100.02	HOOD SUPPORT
90.100.02	HOOD, SUPPORT
90.100.02	HOOD, SUPPORT
90.100.03	GRILLE, ASSY
90.100.03	HOOD CONSOLE & SIDE PANELS

TABLE OF CONTENTS

90.100.04		PEDAL FRAME - 16X16
90.100.04	02	PEDAL FRAME - 16X16
90.100.04	02	PEDAL FRAME - 16X16
90.100.05		PEDAL FRAME - HST
90.100.05		PEDAL FRAME - HST
90.100.05		PEDAL FRAME - MECH
90.108.01		DECALS
90.108.01		DECALS
90.108.02		MODEL DECALS
90.108.03		SLOW MOVING VEHICLE
90.114.01		FOLDABLE ROPS
90.114.01		FOLDABLE ROPS
90.116.01		FENDER
90.116.01		FENDER EXTENSION, MUDGUARD
90.116.02		FRONT FENDER, MUDGUARD
90.118.01		CAB, STEP
90.118.01		CAB, STEP
90.118.01		STEPS & FLOOR MATS - 16X16
90.118.02		MIRRORS
90.118.02		STEPS & FLOOR MATS - HST
90.118.03		CAB MOUNT
90.118.03		MOUNT, RUBBER
90.118.04		PLUG, RUBBER
90.120.01		SEAT
90.120.01		SEAT
90.120.02		SEAT, GRAY
90.120.02		SEAT, GRAY
90.150.01		FRAME
90.150.01		FRAME
90.150.02		CAB ROOF
90.154.01		DOOR
90.154.02		FRONT WINDOW
90.154.02		FRONT WINDOW
90.154.03		REAR WINDOW
90.160.01		PANEL, CAB, FRONT
90.160.02		JOYSTICK, COVER

TABLE OF CONTENTS

90.160.02	JOYSTICK, COVER
90.160.03	PANEL, CAB, RH
90.160.03	PANEL, ROPS
90.160.04	PANEL, CAB, LH
90.160.05	INSIDE CAB ROOF
90.160.06	TRIM PANEL, COVER
90.160.06	TRIM PANEL, COVER, HYDROSTATIC TRANSMISSION
90.160.06	TRIM PANEL, COVER, MECHANICAL TRANSMISSION
90.160.07	INSTRUMENT CLUSTER

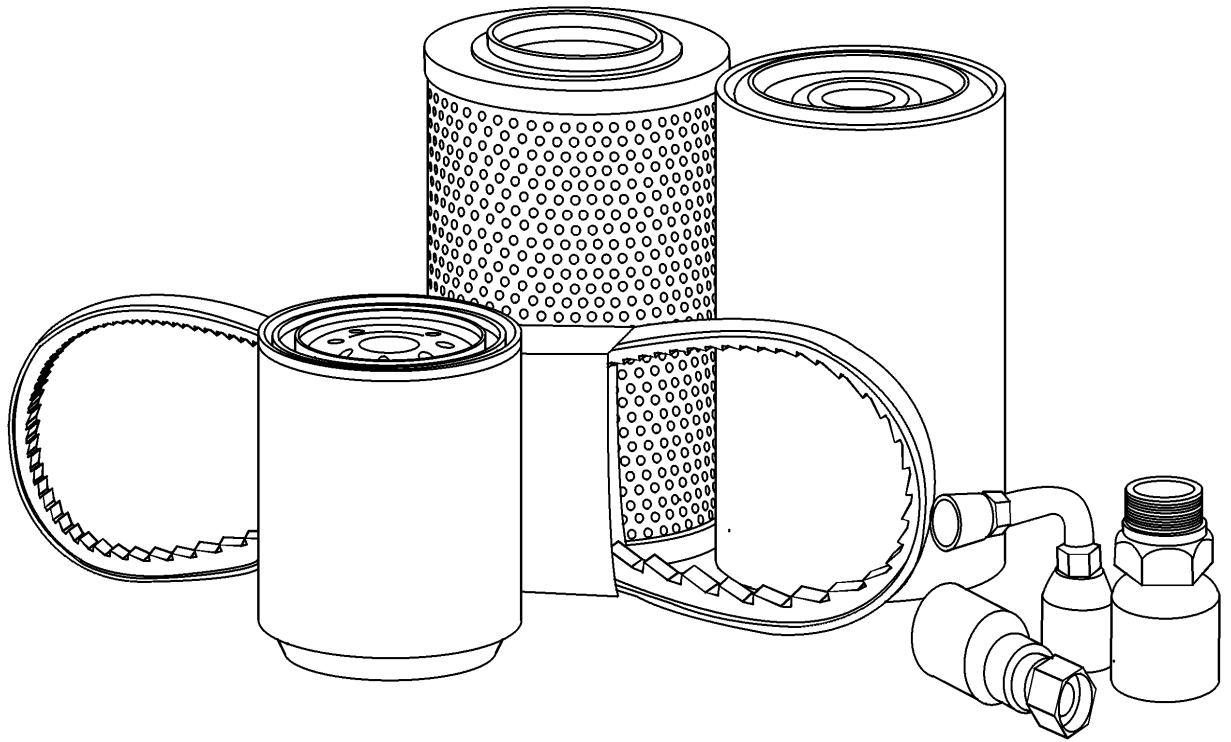
SECTION INDEX

GENERAL & PICTORIAL INDEX

00.100.01

INITIAL STOCKING LIST (ISL)

INITIAL STOCKING LIST (ISL)



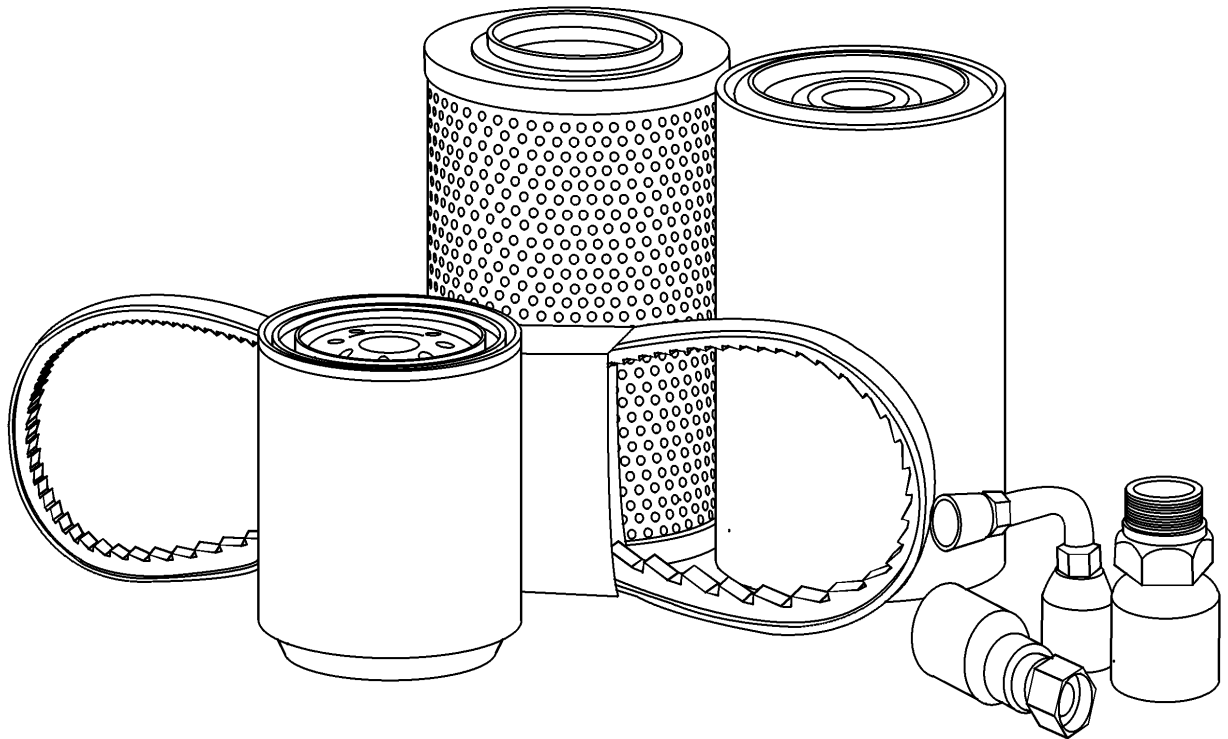
INITIAL STOCKING LIST (ISL)

REF FN	PART NUMBER	YR/SN	QTY DESCRIPTION
	{LIST A}		Parts Required For Preventative Maintenance
1	MT40006977		5 FILTER Engine Oil
2	MT40007487		5 BELT Fan
3	MT40006997		5 CARTRIDGE Fuel Filter
4	87682998		2 AIR FILTER Primary
5	84539215		2 AIR FILTER Air Secondary
6	MT40007638		2 HYDRAULIC OIL FILTER Inline Suction, Mechanical and Hydrostatic Transmission
	{LIST B}		Parts Required For Preventative Maintenance And Basic Repair
7	MT40007156		1 TEMPERATURE SENDER 50 Degree, - 120 Degree, Water
8	MT40027827		1 CAP Oil Fill
9	MT40007802		1 MFD SWITCH Oil Pressure
10	MT40007385		1 CAP Filler
11	MT40012063		1 DIPSTICK Dipstick Oil
12	MT40006998		1 SENSOR Fuel
13	MT40059417		8 PLUG Glow
14	MT40006786		1 CAP Fuel
15	1 MT40162039		1 FUEL GAUGE
16	MT40226183		1 RADIATOR HOSE Outlet
17	MT40226184		1 RADIATOR HOSE Inlet
18	MT40182457		1 DIPSTICK Dipstick Transmission Oil
19	MT40187657		1 RELAY Q/T Sensor
20	MT40186104		5 FUSE 50A Main, 50A
21	MT40194373		1 SWITCH Combination
22	MT40234126		1 SWITCH Horn
23	MT40185307		1 SWITCH PTO Select
24	MT40007119		1 IGNITION SWITCH
25	MT40012655		1 KEY
26	MT40036273		1 MFD SWITCH Diff-Lock
27	MT40007187		1 SWITCH 12V, 20A PTO Start
28	MT40012887		1 MFD SWITCH 12V, 5A Brake Light

(1) Includes Gasket

BOOMER 40-COMPACT TRACTOR BOOMER 50-COMPACT TRACTOR

INITIAL STOCKING LIST (ISL)



**Thanks very much for your reading,
Want to get more information,
Please click here, Then get the complete
manual**

JustClickHere 

NOTE:

**If there is no response to click on the link above,
please download the PDF document first, and then
click on it.**

**Have any questions please write to me:
admin@servicemanualperfect.com**